

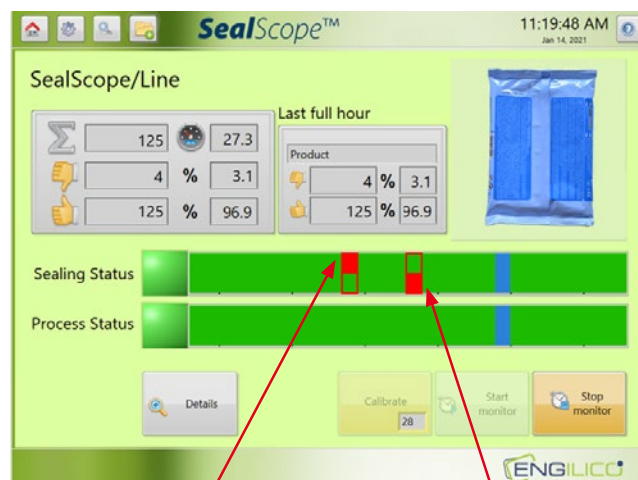
# SealScope™ Longitudinal Seal Monitoring



In flexible packaging applications such as flow-pack packaging, the film is pre-formed with a longitudinal seal before the package is filled and cross-sealed. It is important to continuously monitor the quality of the longitudinal seal as poorly sealed packages, can lead to leaks or open packages. Engilico™ offers a dedicated solution to monitor the position of the longitudinal seal, made by heat sealing, impulse sealing or ultrasonic sealing. This inspection functionality enables to check the overlap in the longitudinal seal by adding a non-contact sensor, as well for opaque, printed as transparent films. The functionality is directly integrated in SealScope™, leading to better quality and higher productivity.

## KEY FEATURES

- ✓ **Longitudinal seal is crucial for packaging quality**
- ✓ **Monitors parameters that influence quality of the longitudinal seal**
- ✓ **For both horizontal and vertical packaging machines**
- ✓ **Applicable for opaque, printed and transparent film**
- ✓ **Fully integrated in SealScope™ software**
- ✓ **Retrofit possible on new or existing SealScope™ installations**



Wrinkle/Fold/  
Product in seal

Longitudinal  
seal defect

## Functionality

A correct overlap of the longitudinal seal is important to guarantee the seal integrity. A non-contact sensor monitors the edge position of the packaging film before it is folded into a tube.

**SealScope™** checks that the packaging film is not conveyed outside of the defined limits, as this can lead to an incorrect or a varying overlap of the longitudinal seal.



## Specifications

	<b>LSM40</b>
Measurement range	40 mm
Sensitivity	0,1 mm
Temperature range	up to 60°C
Dimensions - (w x h x d)	97,5 x 97 x 23,5 mm
IP rating	IP65

Note: The longitudinal seal monitoring functionality is an option to **SealScope™** and consists of sensor, cabling, mounting kit and software. On-site installation is separately quoted.

**Contact us for more information or to validate if longitudinal seal monitoring is applicable for you**



[www.engilico.com](http://www.engilico.com)

**Engilico DACH**  
Eckeseite 55  
D-35216 Biedenkopf - Germany  
edwin.poppe@engilico.com  
T: +49 6461 80 70 417

**Engilico HQ**  
Wingepark 55B  
B-3110 Rotselaar - Belgium  
info@engilico.com  
T: +32 (0)16 49 81 30

**Engilico Trading LLC**  
2 Cityplace Dr - Suite 200  
St Louis, MO 63141 - USA  
andre.bihan.thomas@engilico.com  
T: +1 786 201 2865

Engilico reseller

